

PRIVATE HIRE BROCHURE 2024

# THE DREAMING

THE DREAMING.CO.UK



# Table of Contents



01-02	Introduction		
03-04	Features	20-22	Moments at The Dreaming
05-10	Ground Floor	23	Pricing
11-15	Accommodation: First Floor	24	Testimonials
16-19	Accommodation: Second Floor	25	Contact

# Welcome to THE DREAMING

Held within the deep cleave of the Nant Caethon Valley, The Dreaming is a place where you can deepen your connection to nature, return to child-like curiosity, explore your self and the magical landscape, and honour your body's rhythm.

Central to the holistic environment, the house has been lovingly crafted with restorative benefits of Biophilic design to support wellbeing, ensuring every space benefits from views and access to the wondrous nature that wraps around the building.



We hold a dry-house policy, to honour spiritual practice & to create a clean holistic safe space that gives our guests the best chance to deeply connect. The house also does not have wifi, a conscious decision to invite guests to disconnect from distraction, to be gentle with their minds & bodies, allowing their nervous system a chance to reset.

**Welcome Soul-Voyager, we hope you enjoy meaningful & magical experiences in this very special healing centre.**



# 01 Features

- 7 Bedrooms (Sleeps 15)
- Separate Facilitator Yurt Accommodation
- Large Group Room (up to 16 people)
- Private 1-2-1 Therapy Room
- Communal Dining Area / Flexible Space
- Cosy 'Cwtch' Conversation Area



# 02 Features

- Set in the heart of the Elan Valley
- 47 acres of ancient forest
- Natural Waterfalls
- Natural Plunge Pool
- Elemental Gardens & Ceremonial Fire Pits
- Commercial Kitchen



# Ground Floor Plan

- **Healing Room:** Suitable for up to 14 people for yoga / activities
- **Print Room:** Quiet 1 to 1 space & library area
- **Apothecary:** Information point & gift shop
- **Refectory:** Large communal tables seating up to 20
- **Cwtch:** Lounge Area for connection & chatting
- **Kitchen:** Commercial kitchen space
- **Boutique Yurt** : Being installed February '24 outside house



# Ground Floor: The Healing Room

A large, light, and airy space, designed to be simple and versatile. Activities like movement, yoga, sound healing, and group work take place here. Ideal for **12 - 15** participants in a yoga set up.

We have **15 x Thai 3 fold cushions** (as shown in picture) and **yoga matts** that guests are welcome to use.





# Ground Floor: The Print Room

Celebrating the history of Rhydoldog house, from its earliest known configuration as a 15th Century Cistercian monastery, passed through Georgian and Victorian aristocratic families to the designer Laura Ashley and her family in the 20th Century.

It was from the house that Laura Ashley directed her multinational interior design company, and the Print Room is named so because it was here that Laura created many of her globally renowned prints. Here is a good place for quiet reading or one to one conversations.



# Ground Floor: The Refectory

Where communal meals are enjoyed three times a day, is set in the heart of the house and therefore at the heart of The Dreaming.

With two enormous banqueting tables and dried flowers hanging from the rafters, it is a place to eat and be merry. It can seat up to **20 people** for eating.

This also doubles as a flexible work space.



# Ground Floor: The Cwtch (Welsh for Cuddle)

A space where guests can read, chat, doze, listen to records from our curated collection, play board games, or get snuggled up with a warm drink, a cosy place to find yourself.

Ideal for Conversation & Connection.



# First Floor Plan

The first floor comprises of 4 bedrooms:

- **The Moon:** Sleeps 2, bath ensuite
- **Dawn:** Sleeps 2, shower room
- **Womb:** Sleeps 2, shower ensuite
- **Mushroom:** Sleeps 2, shower & bath ensuite



# Accommodation: Mushroom

**Suite for two individuals sharing**

Inspired by the wonders of Mycelium which connects all individual plants together, the room is south facing with views of the Nant Caethon Valley.

Designed and crafted using rustic natural materials and includes ensuite bathing and walk in shower surrounded by a collection of botanical plants.



# Accommodation: Moon

**Suite for two individuals sharing**

Inspired quite simply by the Moon, the room is south facing with views of the Nant Caethon Valley. The design is pure and natural with inspiration and all furnishings are handmade.

The room includes ensuite bathing overlooking the Moon 'White' garden designed by Juliette Sargent.



# Accommodation: Dawn

**Suite for two individuals sharing**

Designed and inspired by the colours of sunrise seen from the room which is south facing with a balcony to enjoy views of the Nant Caethon Valley.

All handmade soft furnishings were created using natural dyes. Across the hall is a dedicated bathroom with Moroccan inspired shower.



# Accommodation: Womb

**For two individuals sharing**

Facing woodland forest to the north, womanhood and the feeling of comfort are the inspiration of the room.

All furnishings are handmade and dyed using natural ingredients. Womb includes a Moroccan and 'womb inspired bathroom with shower.

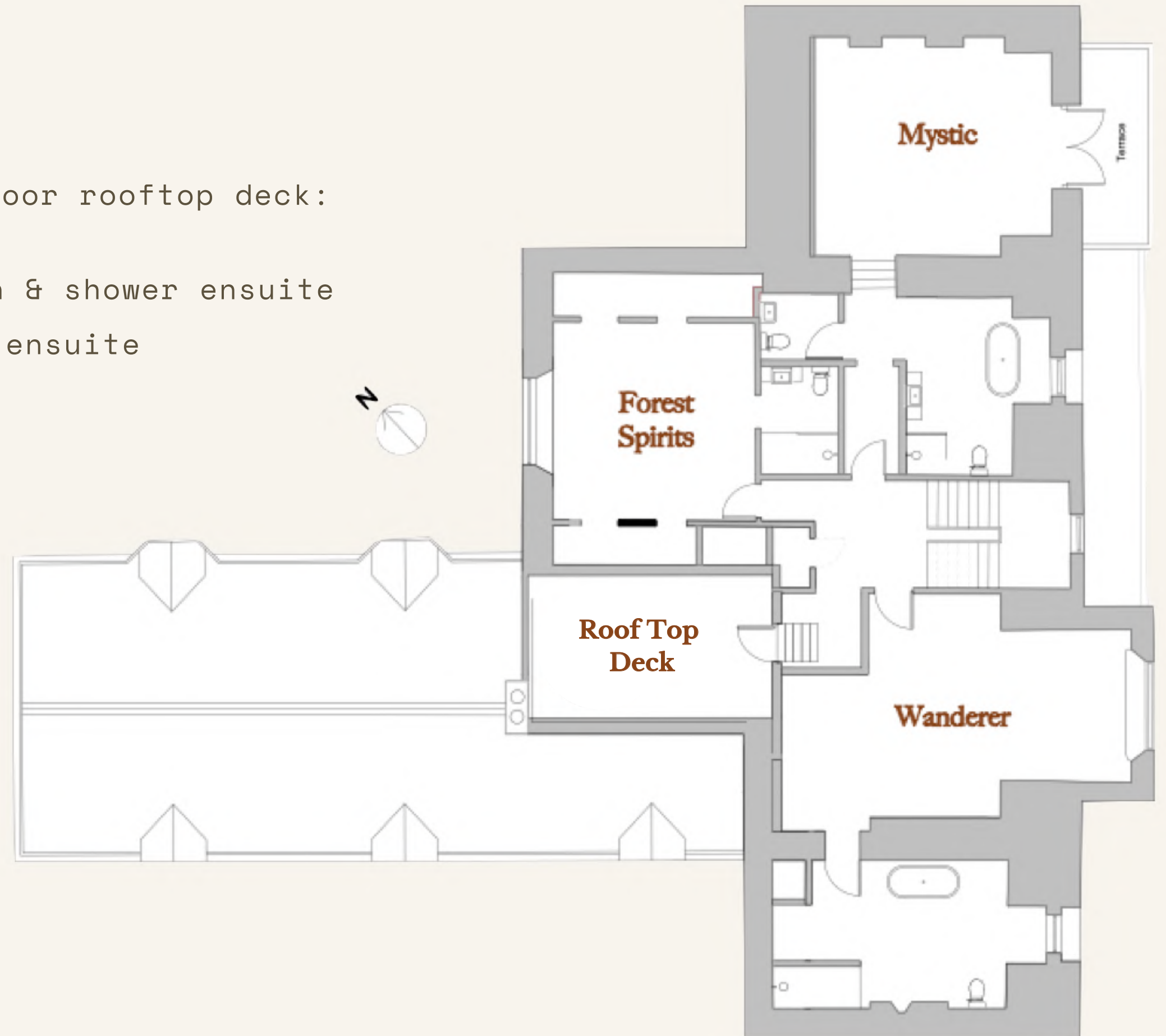




# Second Floor Plan

The second floor hosts 3 bedrooms & the outdoor rooftop deck:

- **The Mystic:** Sleeps 2, private balcony, bath & shower ensuite
- **Forest Spirits:** Sleeps 1 or couple, shower ensuite
- **Wanderer:** Sleeps 3, shower ensuite



# Accommodation: Wanderer

**Suite for three individuals sharing**

Designed as an immersive experience with natural materials inspired by colours and influences from around the world.

The room benefits from south facing views over the Nant Caethon Valley and includes a spacious bathroom with shower and bathing.

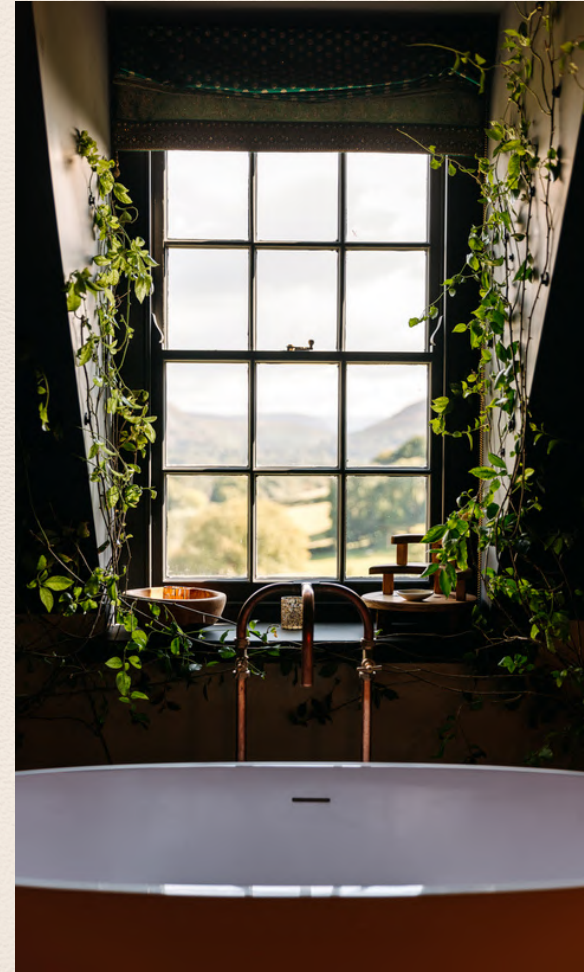


# Accommodation: Mystic

**Suite for two individuals sharing**

Facing south and includes a balcony with views over the Nant Caethon Valley. The suite has been hand sewn using a collection of beautiful saris which create an array of warm and welcoming changing tones throughout the day.

Also includes an immersive bathing experience surrounded by botanical plants.



# Accommodation: Forest Spirits

## Double Suite

Inspired by its view overlooking ancient woodland and Japanese culture, with en-suite bathroom and shower.

This has been designed as an optional, additional treatment room with Tatami matt flooring.



# Moments at The Dreaming Ol

PAGE 20 | PRIVATE HIRE BROCHURE



# Moments at The Dreaming 02



# Moments at The Dreaming 03





# Private Hire Pricing

## What's Included?

-  Exclusive use of Rhydoldog House & 47 acres of Ancient Woodland
-  Accommodation for up to **15 guests**
-  Separate yurt and Shepherds Hut accommodation

## Please Note!

-  Catering is **not included in total cost**, as it is worked out per head - please get in touch for a bespoke quote including meals and refreshments.
-  We reserve the right to amend pricing between quote and booking if **48 hours** have lapsed.

Please contact [emma@thedreaming.co.uk](mailto:emma@thedreaming.co.uk) for a personalised quote.



# Retreat Guests Words

PAGE 24 | PRIVATE HIRE BROCHURE

## Kelley Swan

"The Dreaming Retreat is as **magical** as it gets. Every detail has been consciously curated for relaxation, **healing** and the joy of beauty and being."

## Olivia Summerton

"The house and grounds it's self are dreamy, warm , inviting and inspiring. The natural plunge pools were fabulous. The place has a **soul inspiring energy** that really will take you on a journey of self discovery."

## Alison Lucy

Everything about The Dreaming will exceed your expectations. The house is stunning, with incredible attention to detail. You will leave **feeling nourished by the land.**

## Clare Sanders

**Pure magic!** What an absolute treat for mind, body, spirit and soul The Dreaming is. Seeing is believing and I can't recommend it highly enough.

A place to reconnect with nature, yourself, and others in a truly beautiful, nurturing, healing and held environment.

## Daf James

"This place is **AMAZING!** I had no idea what to expect. But there were so many moments of magic. I was deeply moved by the experience. The house and landscape is **breathtaking.**"

## Christine Whewell

There are actually no words to describe our experience, except it **TRULY WAS TRANSFORMING.** Pure **WELSH MAGIC!**

The setting is breathtaking, the house welcomes you with a beautiful hug and is stunning.




# Let's Connect

 Rhydoldog House, Cwmduddwr, Rhayader, LD6 5HB

 For booking enquiries: [emma@thedreaming.co.uk](mailto:emma@thedreaming.co.uk)

 [www.thedreaming.co.uk](http://www.thedreaming.co.uk)

 @thedreamingretreat